



Stereo Meedia

MANUAL OF UMBRELLAS

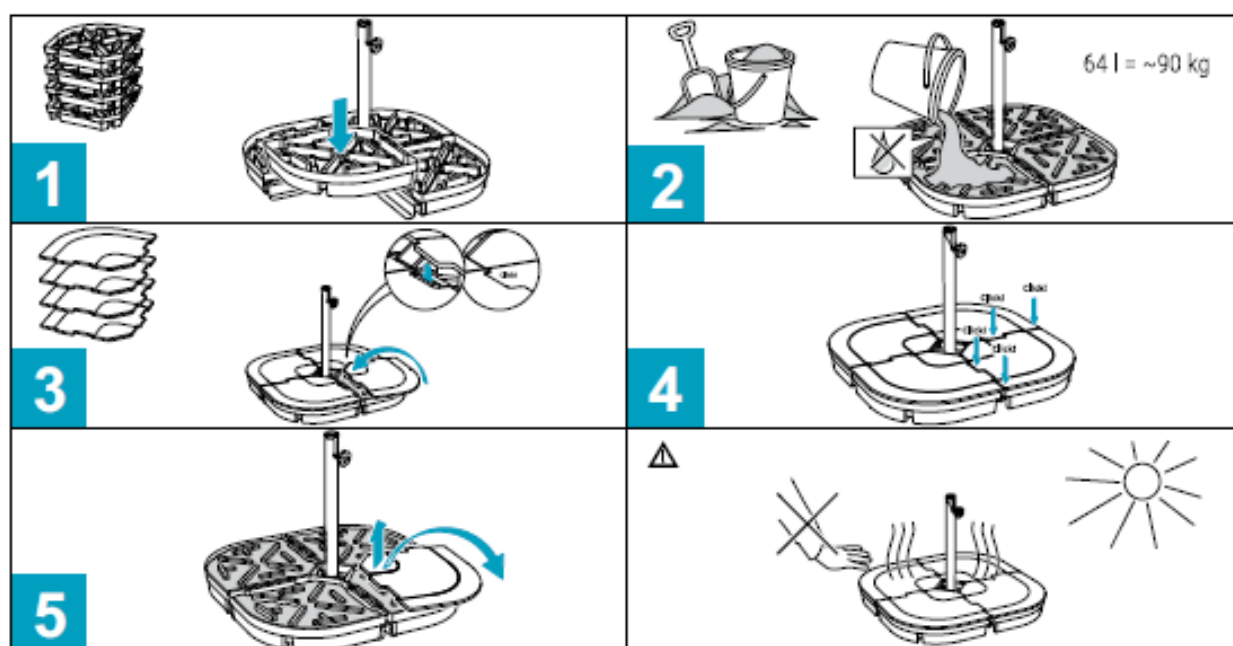
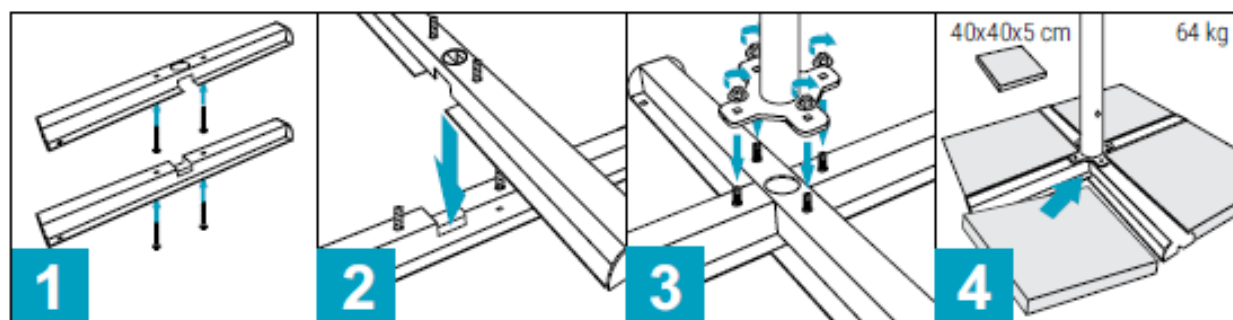
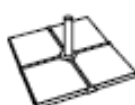
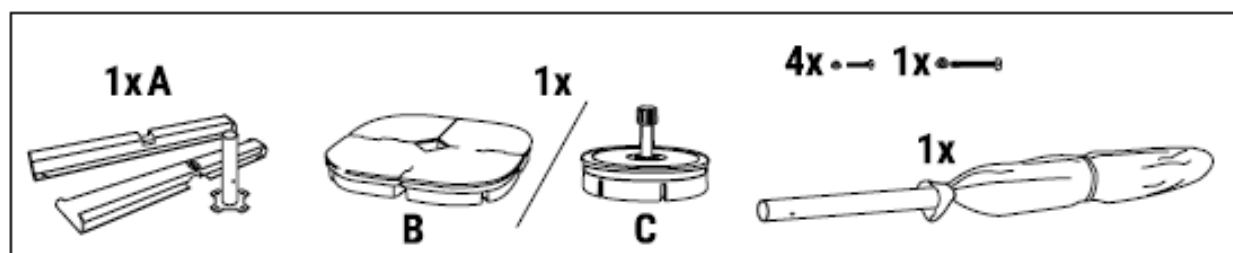


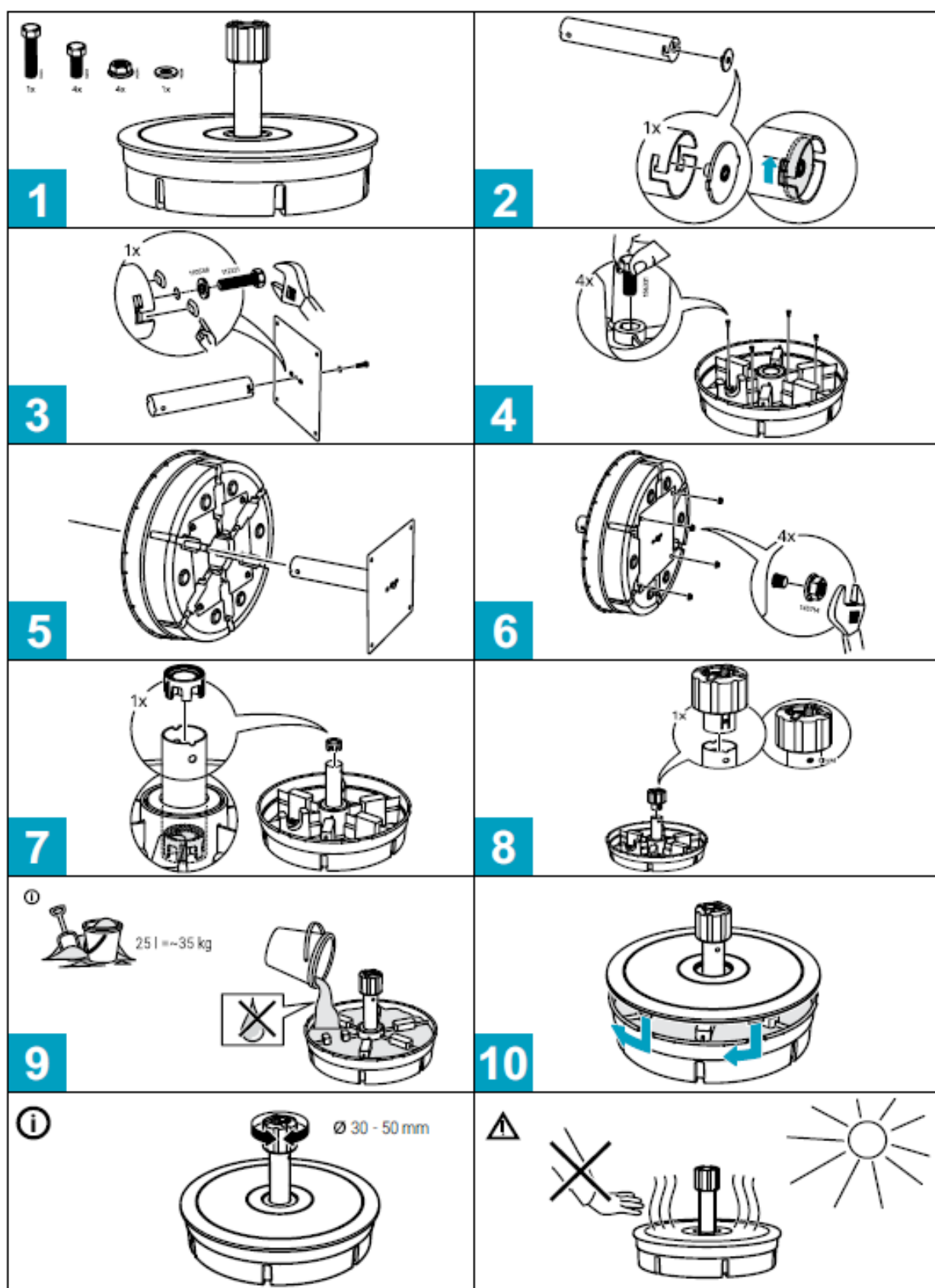
We recommend:

1. The parasol provides shelter from the sun and can serve as an advertising medium. Producer shall not be held liable for misuse of the product.
2. Do not use lubricants on movable parts of the frame.
3. Avoid heavy dirt on the canopy, such as: bird dropping, leaves lying for a long time, etc. It is recommended to wash the parasol with mild detergents such as warm water with soap + delicate cloth, sponge.

Safety:

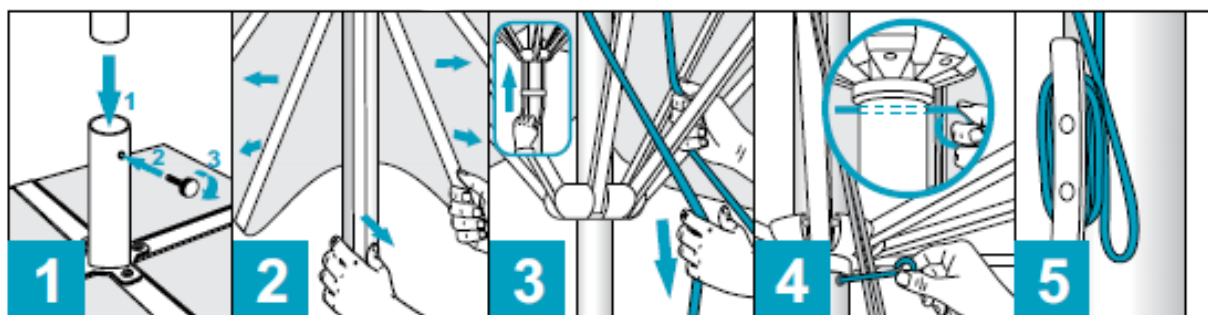
1. Information and recommendations set out in these terms and conditions as well as the instruction manual are aimed to ensure safe use of the product. The parasol can be safely used at wind speed of ca. 30 km/h (4° Beaufort wind scale). At this level of wind force, dust and paper start to rise and small branches start moving. For your own safety, do not use the parasol during a storm or heavy snowfall.
2. It is not permitted to open the umbrella by any means other than a cord which is an integral part of the frame.
3. Do not leave the product unattended.
4. The producer states that polyester fabrics marked with OG/FR symbol are fire resistant and that they meet requirements of PN-EN 13501-1 norm.
5. Any water accumulated on the product must be removed immediately.
6. When the parasol is folded, make sure it's protected to prevent damages caused by strong winds. With wind gusts exceeding 40 km/h, remove the umbrella from the base.
7. When transporting or storing, the canopy and the frame of the parasol should be dry at all times. The product should be transported and stored in a protective cover. Transport and storage without the cover may cause mechanical damage which will not be subject to warranty repair. The concrete base of the parasol should be stored in cool and dry places.
8. Always open the umbrella on an even surface.



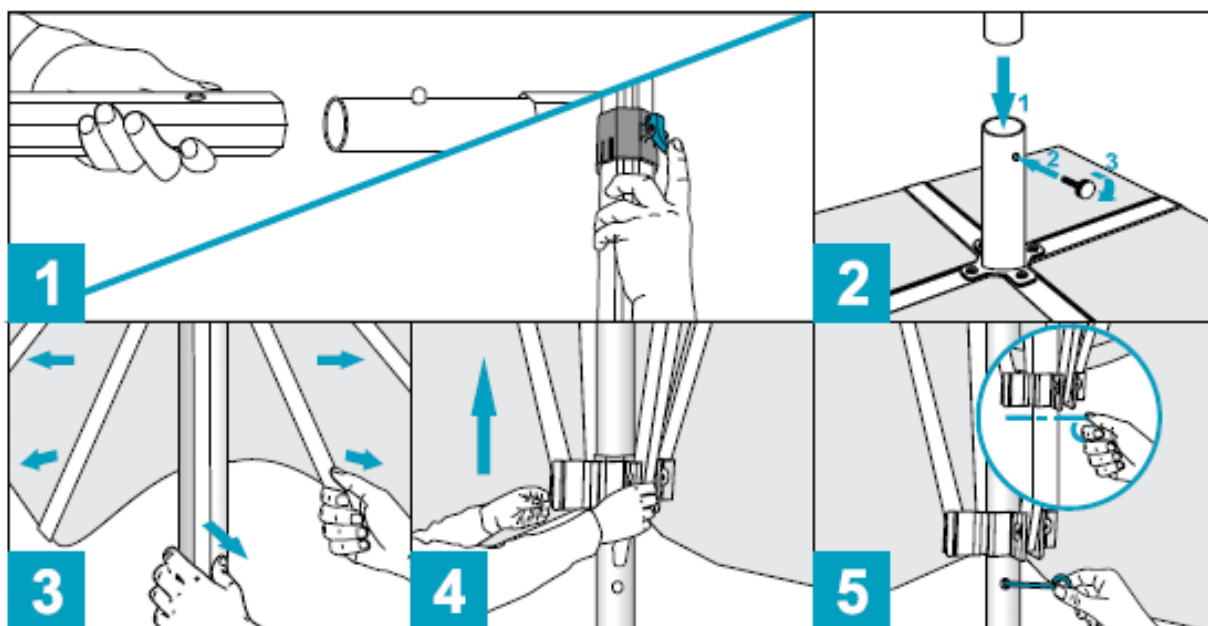




Verona, Catania, Palermo, Milano, Torino



Toledo, Granada, Valencia



Stereo Meedia