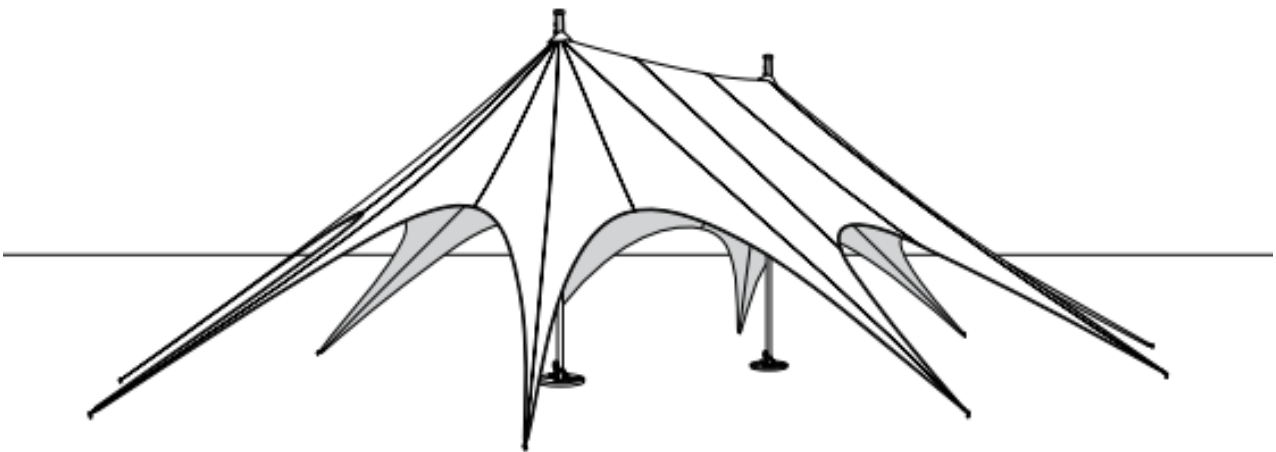




STAR TENT MANUAL



WE RECOMMEND

- Be cautious while folding and unfolding the frame.
- Before spreading the tent, please read the installation instructions carefully.
- Before each tent set up, as well as at least once every 3 days in case of long-term use of the tent, check the condition of the ropes and all screw connections of the base and the crown. If necessary (loose screw connections), replace the washer and self-locking nut with a new one and screw the components back together.
- For mounting and dismounting the tent, you need appropriately: for one-pole tent - 2 persons, two-pole tent - 2 persons, three-pole tent - 3 persons.
- Before disassembling the structure, it must be thoroughly cleaned. The producer is not liable for any damage resulting from multiple assembly/disassembly of the dirty structure.
- The fabric (roof and sidewalls) should be cleaned and dried before packing it into transport bags. The producer does not bear any responsibility for possible stains arisen as a result of storing wet or dirty fabric.
- With recurring gusts of wind, anchoring should be checked systematically.
- To remove the pins and anchors, we recommend that you use an instrument (that is not included in the standard tent equipment).

SAFETY

- Star tent is not intended for use during a strong wind, blizzards, hail, storms, etc.
- The tent must not be left without any supervision.
- The tents are not adapted to exploitation under snow load. One should remove the snow gathering on the roof, if the layer of the snow is 2 cm or higher.
- Water lingering on the roof should be immediately removed.
- The producer states that polyester fabrics marked with OG/FR symbol are fire resistant and that they meet requirements of PN-EN 13501-1 norm.
- Tents in sizes Mini 1, Mini 2, Mini 3, Base 1, Base 2, Base 2 Stage, Base 3 may be used with wind up to 28 m/s (100 km/h) provided it is protected against wind gusts. During stronger wind, it is recommended in all cases to disassemble the tent (first remove the wall and then fold the roof). Mechanical damage resulting from failure to follow the above recommendations are not covered by the warranty.

Table 1. Components of the Star tents



Elements of the tent		The number of pieces in a set						
		Mini 1	Mini 2	Mini 3	Base 1	Base 2	Base 2 Stage	Base 3
Polyester fabric		1	1	1	1	1	1	1
Mast base aluminum		1	2	3	1	2	-	3
Pole base		1	2	3	1	2	2	3
Anchor stakes fixing the base of a tent, length: 460 mm		3	6	9	3	6	6	9
End of the mast with rollers		1	2	3	1	2	2	3
Sets of ropes used to pull the fabric up (inside of the mast)		1	2	3	1	2	2	3
Stakes from the try square with snap-hooks, length: 450 mm		8	10	14	8	14	10	18
Hammer 2 kg		1	1	1	1	1	1	1
Legs-arranging tool		1	1	1	1	1	1	1
Carry bags (+ one bag for walls)		3 (4)	4 (5)	6 (7)	3 (4)	4 (5)	4 (5)	6 (7)

Table 2. Wear parts of the base and the crown of Star tents

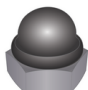
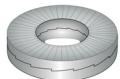


Elements of the tent		Details
Cap nut of base		Cap nut with self-locking insert (DIN 986) M10, galvanized
Washer of the base		Wedge washer Nord-Lock NL 10
Cap nut of the crown		Cap nut with self-locking insert (DIN 986) M5, galvanized
Washer of the crown		Spring washer M5 (DIN 127), galvanized

Fig. 1. Star tent measuring

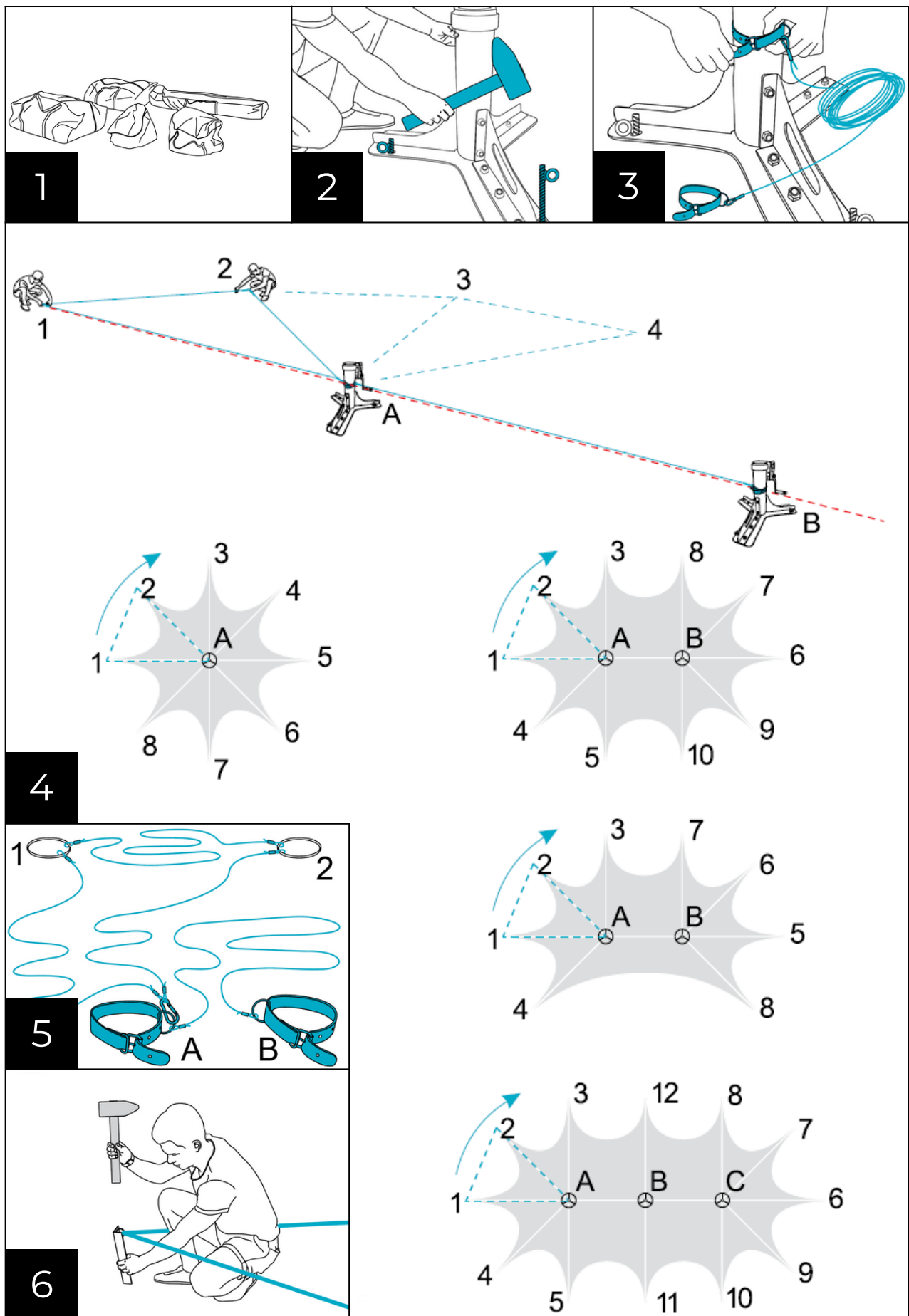
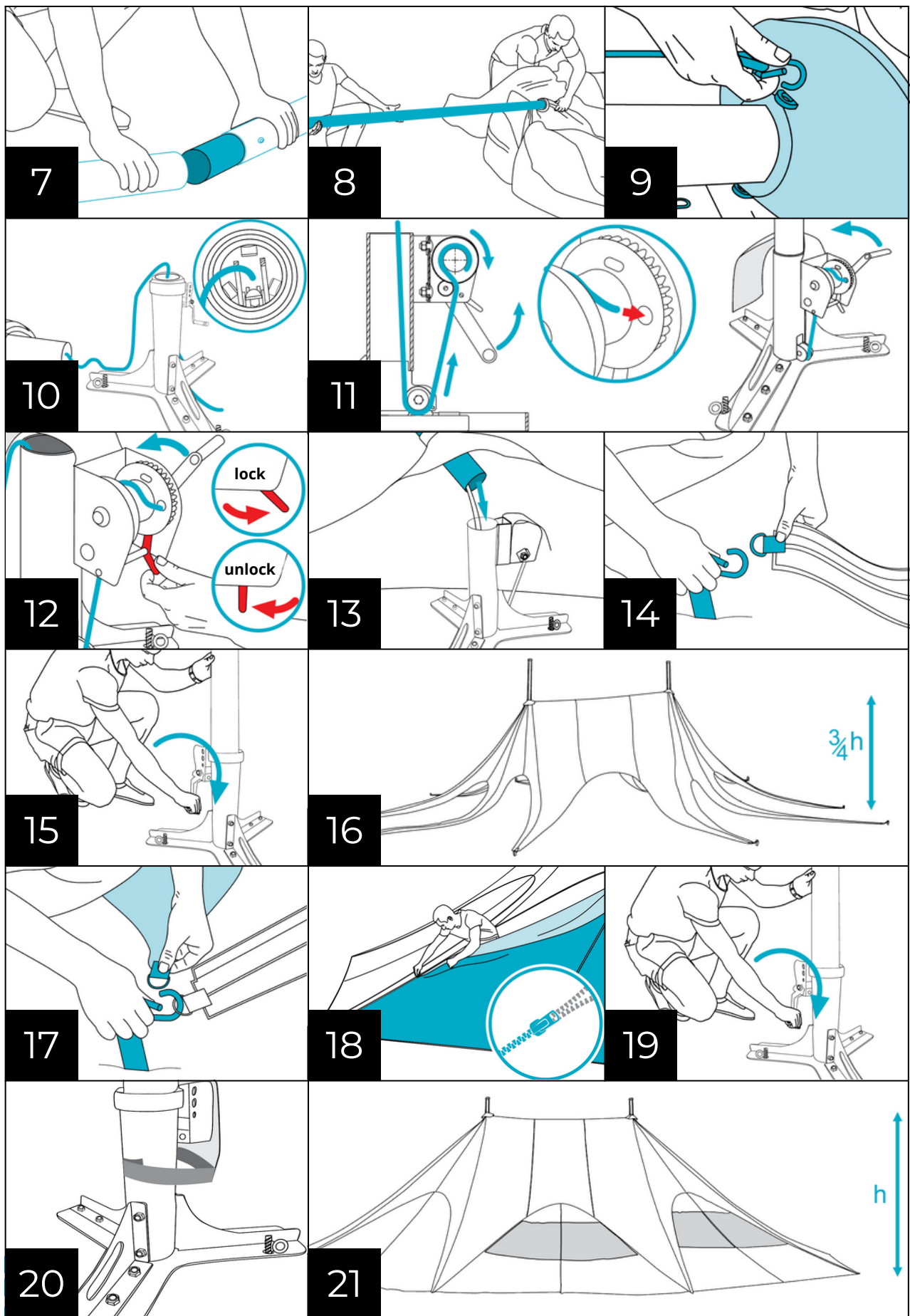


Fig. 2. Star tent installation process



MONTAGE

Figure 1 and 2 present measuring and installation process of two-pole tent with walls. In the case of higher or lower number of poles, proceed similarly with each pole.

- 1) Pull out all the components and check that the contents of the bags are in accordance with the list of components.
- 2) Set the base of the pole on a flat surface and attach it with 460 mm pins to the ground.
- 3) On the base of the tube, fasten the belt of the instrument to measure arms.
- 4) Using the instrument, mark the spots where you want to insert 450 mm anchors. In the case of tents with two or more poles, mark the first spot (1) with a string along the center-line of the poles (A, B, C) and stretch it into a triangle by receiving the second spot (2). Measure further spots by shifting the corner of instrument's triangle (1) on the previously inserted anchor (2), while the second corner of the measuring triangle (2) will set out the next spot for the anchor (3).
- 5) The instrument to measure the distance between the poles has strings with stripes. To measure the distance between anchors and poles, use the strings with wheels.
- 6) Insert 450 mm anchors in the designated spots.
- 7) After measuring and inserting all the anchors, fold the pole (poles). Note that the string to pull the roof in, runs in the middle of the pole.
- 8) Cover the folded pole with a roof.
- 9) Insert the piece of string sticking out of the pole to the base of the tube.
- 10) Pull out the string from the bottom, lean it against the reel and enter the end of the string to the hole in ratchet mechanism.
- 11) Check if the ratchet mechanism is in "lock" position. The ratchet secures the winch against release.
- 12) Put the "cap" on the pole. Through the holes in the "cap" thread the ears of roof's crown. Fasten the hooks with strings to the ears.
- 13) Embed the pole in the pipe.
- 14) Buckle up the arms of the tent by using fences, to previously measured and inserted anchors.
- 15) Roll the winch to lift the roof.
- 16) Lift the roof up to about $\frac{3}{4}$ of the height of the pole.
- 17) Buckle up the walls to the fences supporting the arms of the roof.
- 18) Pull up the zippers.
- 19) After zipping all the walls, lift the roof by rolling the winch until you sense resistance.
- 20) Secure the ratchet with PVC belt.

DISASSEMBLY

- 1) Remove all the items under the tent.
- 2) Release the ratchet (fig. 2, point 12) to "unlock" position, be sure to hold the winch with your other hand.
PLEASE NOTE! If you release the winch without holding it, you may be hit. Slowly roll the winch to lower the roof to 3/4 of height. Slide the ratchet of the mechanism to "lock" position.
- 3) Detach and fold the walls; put them into the bag.
- 4) Lower the roof entirely.
- 5) Unpin the arms of the tent from the anchors.
- 6) Remove the pole from the base and remove the string from the base of the mechanism.
- 7) Take the roof down, fold the pole (poles).
- 8) Remove the base pins and arms' anchors from the ground and remove the remnants of ground from them.
- 9) Put all items to appropriate bags.

The producer reserves the right to implement changes to above information.

